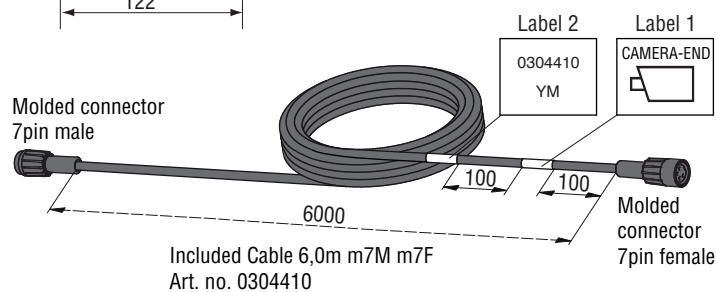
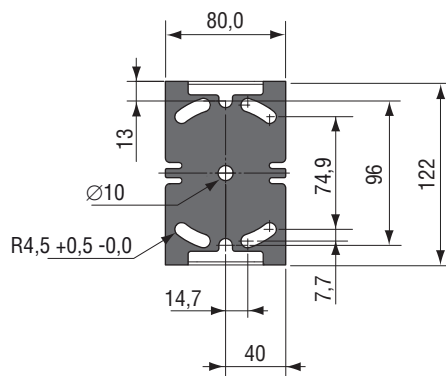
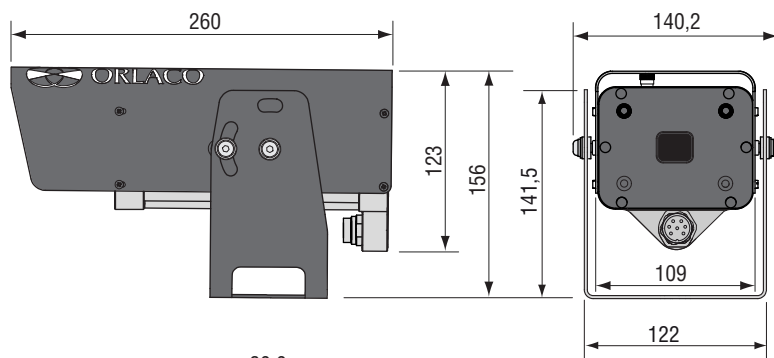


Product Data

Dimensions



Units in mm

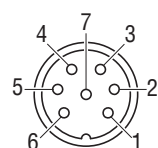
TECHNICAL DATA

Camera TIC 320 9Hz connector type

Camera TIC ALU RS 485

Article number	Description
Article number	0103730 Camera TIC 9Hz connector type RS232
	0113730 Camera TIC ALU RS485
	Special Features
	Field switchable between NTSC and PAL. DDE (second generation Digital Detail Enhancement). (SSO) Smart Scene Optimization. (ACE) Active Contrast Enhancement. FFC Duration < 0.5sec (Flat Field Correction).
	Sensor
Sensor	Uncooled LWIR Thermal Imager 324 x 256 VOx Microbolometer.
Pixel size	25 micron.
Frame Rates	30/60 Hz (NTSC); 25/50 Hz (PAL).
Sensitivity	<50 mk f/1,0.
Scene Range	High Gain -40°C to +160°C. Low Gain -40°C to +550°C.
Digital zoom	2x & 4x.
Video	NTSC/PAL, field switchable.
Lens	WFOV (Wide Field Of View), 19mm (f1.24) 24° x18°.
Color	15 Color Palettes (LUTs).
	Electrical
Power input	12..30V/DC (24V/Dc = preferred voltage)
Power consumption	Heating off: 3,5W @ 24V/Dc, heating on: 7,1W @ 24V/Dc.
Heater	2.4W, Puls Width Modulated, activated from <+15°C.
Transient protection	Camera may be powered directly from 12v or 24v battery without additional electrical protection since camera has an integrated circuit that protects the camera against over- and undervoltage, spikes, ripples and loaddumps.
Inrush current	With and without heating: 0,7A at 24V, t=2ms.
Electrical Protection	>33V..<80V overvoltageprotection, <12V undervoltageprotection, protected against loaddumps, spikes and surges, reverse polarity on all wiring.
Power Cable	Included Art. no 0304410 Cable 6,0m m7M m7F.
Communication	RS232 and RS485, High Speed Camera Communication with Orlaco monitor.
Presets	128 presets Visca and 255 presets Pelco-D.
	Mechanical
Construction	Anodized aluminium housing corrosion proof according to MIL-A-8625E (Acetic Acid Salt Spray Test); drynitrogen filled, 1,4 Bar overpressure.
Operating temperature	Range -40°C to +80°C.
Temperature shock	(5 degree per min).
Vibration	(4,3gs three axis, 8hrs each).
Shock	(200g shock pulse w/ 11msec saw tooth).
Bracket	Standard bracket suitable for mounting overhead and horizontally.
Protection	Protection IP 69K according to IEC 60529.
Weight	2,6 Kg.
	Certification
Approvals	EMC certified FCC/CE Class B. ROHS, REACH and WEEE Compliant.
Green Passport	All materials are compliant to Green Passport requirements according IMO resolution MEPC.197(62) as adopted on 15 July 2011 (Maritime sector:International Maritime Organization concerning the functions of the Marine Environment Protection Committee)
Serial commands	See Orlaco Visca protocol manual; IM0973300 .
Installation	See Installation Manual; IM0973120 .

Electrical connections.



Solder side
7P Male socket

1 = Coax core
2 = Coax shielding
3 = Red
4 = Black
5 = Yellow
6 = Orange
7 = Grey
Shielding

RS232

Video
Video GND
Camera power, 12...30V/DC
Camera 0V
Serial TX
Serial RX
N.C.
GND

RS485

Video
Video GND
Camera power,
Camera 0V
B (inv)
A (non-inv)
N.C.
GND

All data subject to change without notice. All dimensions are for commercial purpose only.
The camera/display systems from Orlaco comply with the latest CE, ADR, EMC and mirror-directive regulations, where applicable.
All products are manufactured in accordance with the ISO 9001 quality management system, ISO/TS 16949 quality automotive, ISO 14001 environmental management systems and all Ex products with the IECEx scheme and ATEX directives, where applicable.

