

## SC-42

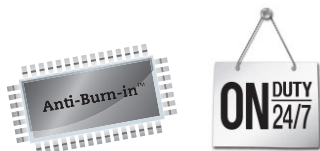


LED 

A quality and reliable 42" surveillance display featuring full HD resolution and wide viewing angles, is designed for security and control centre environments.

The SC-42 LED-backlit colour display, with Full HD resolution and 3000:1 contrast ratio, provides consistent colour and high digital image quality. The Anti-Burn-in™ technology prolongs the life time of TFT LCD panels. Quick signal-switching and built-in speakers maximise the effectiveness of real-time security monitoring. Versatile connectivity of analog and digital signals enables smooth system integration. Incorporated with looping BNC inputs, the SC-42 allows multiple display connections and is ideal choice for security and control environments.

- > FHD 1920 x 1080 resolution
- > Anti-Burn-in™ technology
- > Built-in Image Enhancer: 3D Comb Filter/Deinterlace/Noise Reduction
- > Versatile connectivity (VGA, HDMI, BNC in/out, S-Video, Audio in/out)
- > Looping BNC video inputs for multiple connections
- > Quick signal-switching time (<=0.8 sec.)
- > NTSC/PAL auto-detection
- > Selectable signal source
- > PC compatible
- > Built-in speakers
- > Auto-adjustment for optimal setting
- > VESA standard wall mount
- > Rigorous screening of the components for mission-critical 24/7 applications



# SC-42

## Specifications

## SC-42

<b>Panel</b>	Panel Type Panel Size Max. Resolution Pixel Pitch Brightness Contrast Ratio Viewing Angle (H/V) Display Colour Response Time	LED-Backlit TFT LCD (MVA panel) 42" FHD 1920 x 1080 0.485 mm 400 cd/m <sup>2</sup> 3,000:1 178°/178° 16.7M 3 ms
<b>Horizontal Resolution</b>	TV Lines	625TVL (NTSC) 650TVL (PAL)
<b>Frequency (H/V)</b>		H: 31.5 kHz - 80 kHz V: 50 Hz - 75 Hz
<b>Input</b>	Analogue HDMI CVBS S-Video	15-Pin D-Sub HDMI BNC x 1 4-Pin mini DIN
<b>Out</b>	CVBS	BNC x 1
<b>Audio</b>	Audio In Audio Out Speaker	1 x stereo audio in for PC 1 x stereo audio out 2W x 2
<b>Power</b>	Power Supply Power Requirements Consumption	Internal 100 ~ 240V, 50 - 60Hz < 80 W (On)
<b>Plug &amp; Play</b>	VESA	EDID
<b>Operating Conditions</b>	Temperature Humidity	0 °C ~ 40 °C 10% ~ 85%
<b>Storage Conditions</b>	Temperature Humidity	-10 °C ~ 50 °C 10% ~ 95%
<b>Mounting</b>	VESA FPMPI	Yes (400 x 400mm)
<b>Dimensions</b>	Product (W x H x D) Packaging (W x H x D)	992.3 x 656.3 x 240 mm (39.1" x 25.8" x 9.4") 1073 x 703 x 142 mm (42.2" x 27.7" x 5.6")
<b>Weight</b>	Product Weight Packaged Weight	14.5 kg (32 lbs) 16.5 kg (36.4 lbs)
<b>Regulation Approval</b>	Certifications & Compliance	CE, FCC, RoHs, WEEE
<b>Accessories</b>	Supplied	User manual, Base assembly installation guide, Remote control with AAA batteries, power cord, 15-Pin D-Sub cable & audio cable, screw package



Stylish and slim design ideal for professional security environments



Built-in speakers enable more rigorous security monitoring



Looping BNC video inputs allow multiple display connections



Video versatility, including VGA, HDMI, S-Video and BNC In/Out