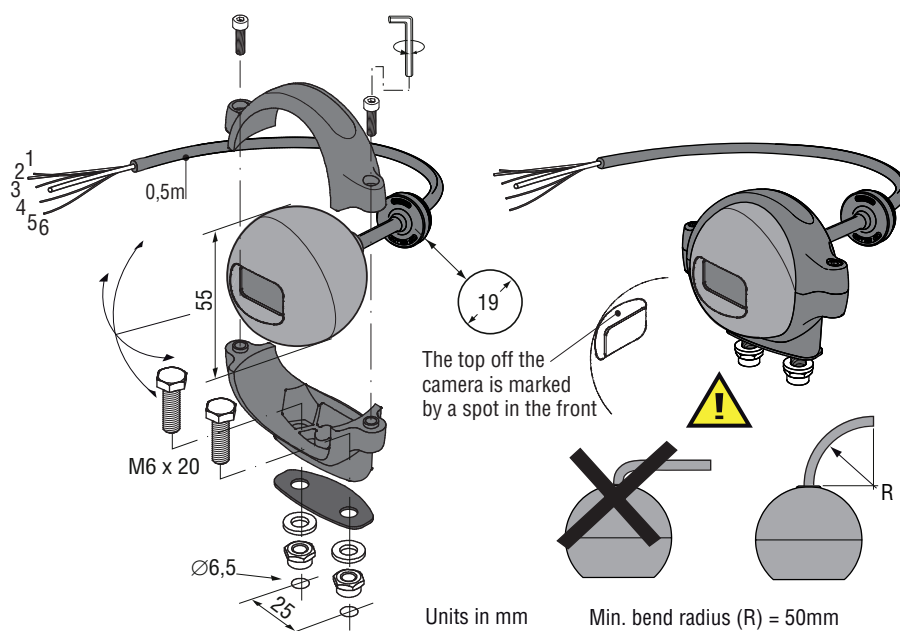


Product Data



Dimensions



TECHNICAL DATA

Compact Camera CCC Ex *° PAL/NTSC

Zone 1

	Description						
Article number PAL	0193000	0193010	0193020	0193030	0193040	0193050	0193060
Article number NTSC	0193070	0193080	0193090	0193100	0193110	0193120	0193130
Horizontal angle	81°	70°	52°	44°	33°	23°	12°
Vertical angle	61°	53°	39°	33°	25°	11°	9°

Sensor	1/4 inch CCD Image sensor.
CCD total pixels	PAL: 795(H) x 596(V), NTSC: 811(H) x 508(V).
Minimum illumination	1,5 Lux (F1.2, 5600°K).
Resolution	470 TVL / 580 TVL (Enhanced).
S/N ratio	52dB (MIN) / 60dB (TYP) (AGC OFF).
Video output	1,0V p-p composite video at 75 Ohm.
Gamma correction	0,45
Gain control	AGC
White balance	ATW/AWC/Fix (zero color rolling).
White balance range	AWB, ATW(3200-10.000°K)/fix(3200°K).
Mirror function	REV./ NOR. Switchable via orange wire connected to 12V/DC.



Camera must be connected to a fuse 250 mA slow blow.

Electrical	12V/DC +/-10%, consumption 250mA heating on, 85mA heating off. Camera must be connected to a fuse 250 mA slow blow. The breaking capacity of the fuse must be in accordance with the prospective short circuit current of the supply.
Power	Art. no 1220110, metric marker. 5,0 meters (+/-0,04m), the cable shall be fixed mounted.
Cable	

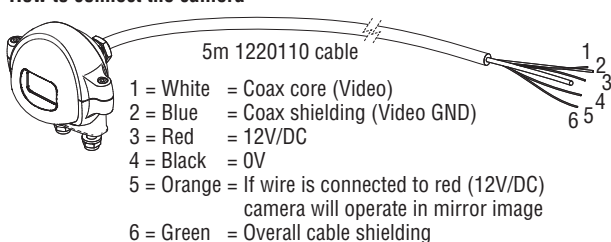
Mechanical	Shock and vibration resistant for usage on offshore platform.
Shock constancy	0,44 kg, without cable.
Weight	Chemically hardened, toughened, tempered floatglass, 5 to 7 times stronger than ordinary glass.
Lensglass	Stainless steel 316L, IP68 according to IEC 60529. IP69K according to EN 40050-9.
Housing	Camera bracket is made of glass reinforced polyamide, survives torque test: 50 Nm at -40°C...+75°C.
Camera bracket	T4;-40°C<+75°C, T5;-40°C<+50°C, T6;-40°C<+35°C.
Ambient temperature	

Certification	EN 60079-18: 2009, EN 60079-0: 2009. Cable is designed according UL Style 20549.
Approvals	ATEX Certificate: DEKRA 16ATEX0055X Iss. 0. IECEx Certificate of Conformity: IECEx DEK 16.0022X iss. 0.
Certificates	All materials are compliant to Green Passport requirements according IMO resolution MEPC.197(62) as adopted on 15 July 2011 (Maritime sector:International Maritime Organization concerning the functions of the Marine Environment Protection Committee)
Green Passport	

Ex Specifications	CE0344
	Ex II 2 G Ex mb IIC T6/T5/T4 Gb.
	Ex II 2 D Ex mb IIIC T85/100/125°C Db.

Electrical connection

How to connect the camera



NOTE: The free end of the permanently connected, unterminated cable is to be connected in an appropriate way, e.g. with the Orlaco Junction box Ex.

Date/serial number marking see camera label: EYMXXXX

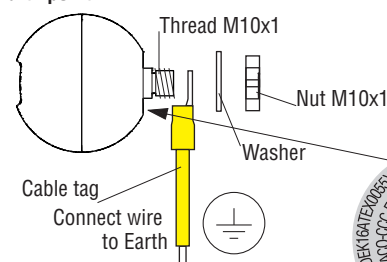
E = Prefix = Ex

Y = Year; 1st digit: 2016 = G,

M = Month; 2nd digit: January = A.

X = Follow-up number, restarted every month; 4 digits (Letters and/or numbers).

Earth point



All data subject to change without notice. All dimensions are for commercial purpose only.

The camera/display systems from Orlaco comply with the latest CE, ADR, EMC and mirror-directive regulations, where applicable.

All products are manufactured in accordance with the ISO 9001 quality management system, ISO/TS 16949 quality automotive, ISO 14001 environmental management systems and all Ex products with the IECEx scheme and ATEX directives, where applicable.

