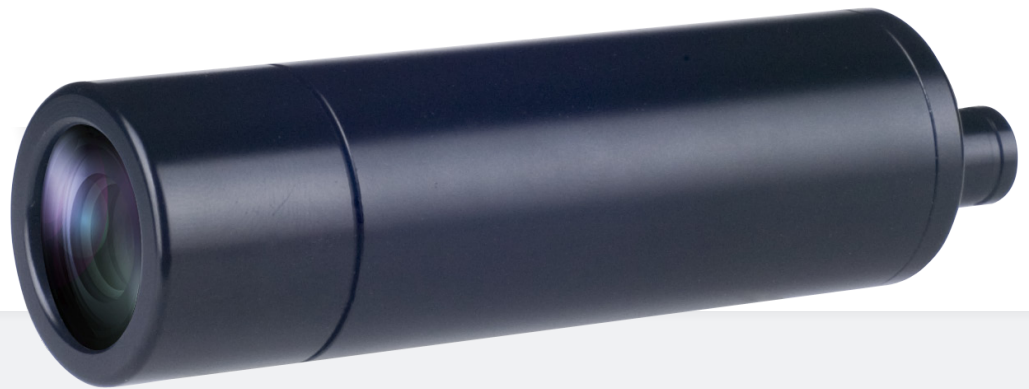


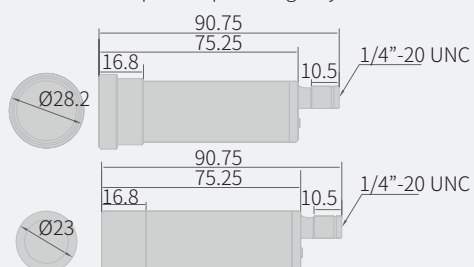
# HD-TVI Camera

# ZB232

- 1/2.7" 2.1MP Progressive Scan CMOS
- -
- Fixed Boad Lens
- 2DNR, BLC
- 12VDC Max. 90mA



IP67:Waterproof Cap Housing Only



# Features

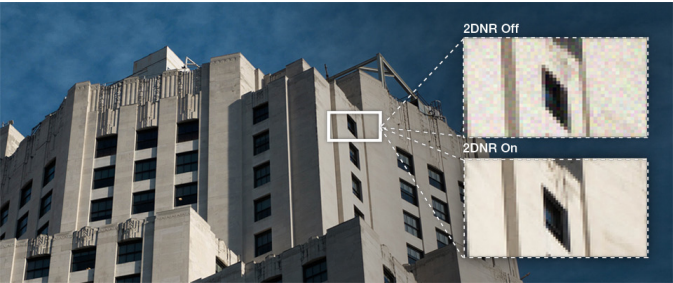
## ZB232

1/2.7" 2.1MP Progressive Scan CMOS

-

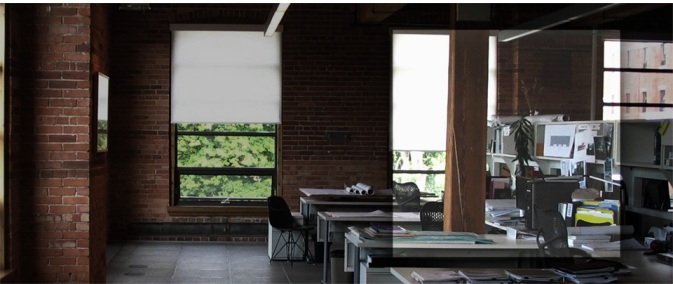
Fixed Boad Lens

2DNR, BLC  
12VDC Max. 90mA



### 2DNR

DNR technology is crucial for suveillance camera. 2DNR works by analyzing individual frames of video in order to adjust pixels and provide clear image.

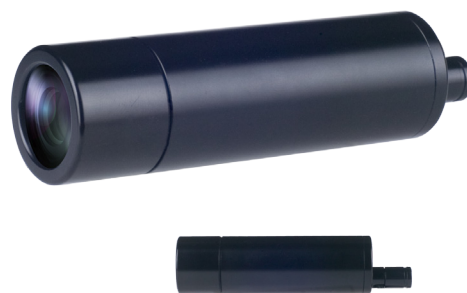
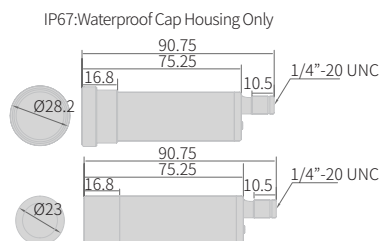


### BLC

BLC technology works by reducing the dynamic range of the entire image, while retaining the overall contrast. By compensating for unbalanced in a scene, detail is restored throughout the field of view so as to provide better visibility to identify an object of interest.

# HD-TVI Camera ZB232

## Dimensions



## Specifications

<b>Image Sensor</b>	1/2.7" Progressive Scan CMOS
<b>Effective Pixels</b>	1930(H) x 1088(V), 2.1MP
<b>Max. Video Resolution</b>	1080p@30(25)fps
<b>Lens</b>	f=3.6mm / f=4.3mm / f=6mm
<b>FOV</b>	-
<b>F-Stop</b>	-
<b>Min. Illumination (AGC Max)</b>	-
<b>Shutter Speed</b>	1/30(1/25) s - 1/10,000 s
<b>IR LED</b>	-
<b>IR Distance</b>	-
<b>Day / Night</b>	Electronic D/N
<b>White Balance</b>	Auto / User / (Push) / 8000K / 6000K / 4200K / 3200K / Hold
<b>Digital Zoom Ratio</b>	-
<b>WDR</b>	-
<b>BLC</b>	0 - 16 Selectable
<b>DNR</b>	2DNR

<b>DSS</b>	-
<b>AGC</b>	1 - 5 Selectable
<b>Other Function(s)</b>	Mirror/Brightness/Sharpness/Contrast/Hue/Gain
<b>Privacy Masking</b>	Yes
<b>Motion Detection</b>	Yes
<b>Transmission Distance</b>	500 m
<b>Video Output (Main)</b>	HD-TVI
<b>Video Output (Service)</b>	-
<b>OSD Control</b>	Built-in Controller, External Control (TVI-UTC)
<b>OSD Language</b>	ENGLISH / CHINESE
<b>Housing Material</b>	Aluminium
<b>IP Rating</b>	IP67 (Waterproof Cap Housing Only)
<b>Operating Temperature</b>	-10°C to 50°C (14°F to 122°F)
<b>Max. Power Consumption</b>	12VDC 90mA
<b>Dimensions (W x H x D mm)</b>	Ø23 x 75.25
<b>Weight</b>	Approx. 67 g (0.15 lbs)

## Ordering Information

ZB232 (Not all combinations are possible)

Signal Type	Lens	Silk Printing	Color
NTSC	f=3.6mm f=3.7mm	OEM-printed	Black
PAL	f=4.3mm f=6mm	OEM-printed	White
		Non-printed	



**ALLWAN | SECURITY**  
VIDEO & SECURITY SOLUTIONS

Tel: +33 2 41 35 01 25  
info@allwan.fr