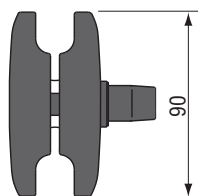


Product Data

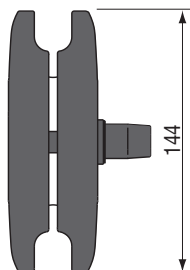


Dimensions

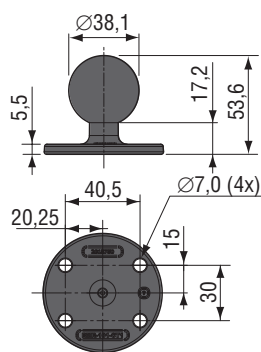
Units in mm



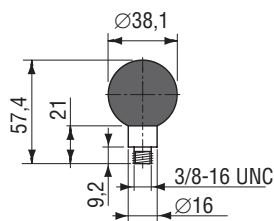
Article no. 2015510



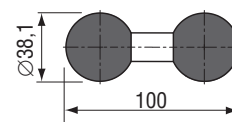
Article no. 2015800



Article no. 2015750

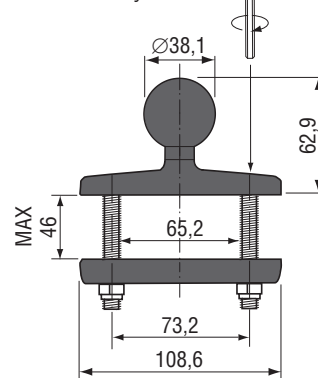


Article no. 2015710



Article no. 2015900

3/16" Allen key included



Article no. 2015950

TECHNICAL DATA

Bracket parts

Description



Article number
Name

2015510

Connection
clamp
adjustable
bracket 90mm
3½" clamp

2015710

Ball joint
3/8" UNC

2015750

Ball joint
with
connection
plate
Round base
2½"

2015800

Connection
clamp
adjustable
bracket 144mm
5¾" clamp

2015900

Double ball
joint

2015950

Clamp unit
with ball joint

Description

Weight

Material

Ball size

Operating Temperature

0,12kg

Black Powder Coated Aluminum

1½" rubber ball.

-40°C...+85°C

0,04kg

0,05kg

0,32kg

0,11kg

connects 2
clamps

Attachment to
guard on
forklifttruck.
Included Allen Key
0,29kg

All data subject to change without notice. All dimensions are for commercial purpose only.

The camera/display systems from Orlaco comply with the latest CE, ADR, EMC and mirror-directive regulations, where applicable.

All products are manufactured in accordance with the ISO 9001 quality management system, ISO/TS 16949 quality automotive, ISO 14001 environmental management systems and all Ex products with the IECEx scheme and ATEX directives, where applicable.

