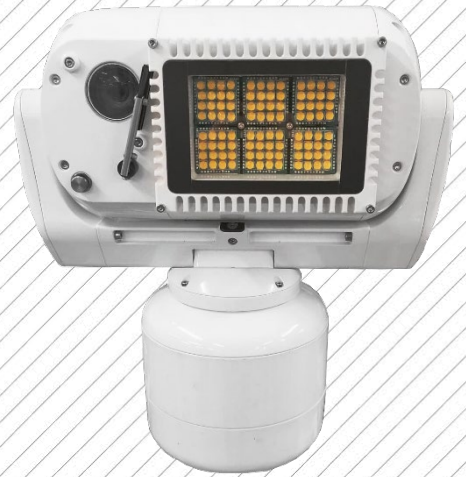


AERON HYPERION



The Aeron Hyperion is a compact surveillance solution using HD video and an interchangeable Illuminator Module (IM) that can be exchanged prior to deployment or hot swapped in the field. The IM is available in three variants: flood, spot, or dynamic zoom.

The Aeron is a compact, rugged, continuous rotation PTZ camera that has been specifically designed for harsh and challenging environments. The visible module features superb low light HD performance, dynamic noise reduction (saving bandwidth), intelligent auto exposure and auto focus to enable a crisp image at range.

The IMs can be configured in a number of Beam Widths ranges from 3-degrees (spot) to 120-degrees (flood), or hybrids of these beam widths. The IMs can also be configured with either White, IR (840nm), IR (910nm), Green or Red Light.

The Individual control of these IBs allows for the delivery of hybrid Beam Width and Wavelength IMs. IM consists of six individual Illuminator Boards (IBs) that can be addressed individually and deployed with differing Beam Width Lenses or LED types.

When delivered with hybrid Beam Width Lenses the IM can intelligent distribute power between the 'Flood' IBs and the 'Spot' IBs based on the current camera FOV. This ensures no power / light is wasted. Burst Mode allows the user to temporarily increase the maximum light output by 20% for a configurable period of time.

KEY FEATURES

- HD-IP video with 30x optical zoom
- Target Illuminator up to 500m*.
- Total max output of 60,000 lumens.
- Brightness control (1-100%).
- Strobe mode.
- Intelligent beam width.
- Burst mode.
- Compact housing with a wiper as standard.
- Multiple mounting options
- 360° continuous rotation.
- High performing pan and tilt speeds up to 160° per second.
- Highly ruggedised and IP67 compliant.

*Subject to Beam Width

WWW.SILENTSENTINEL.COM
+44 (0) 1920 871 734



Aeron Hyperion Switched On

FREQUENT APPLICATIONS

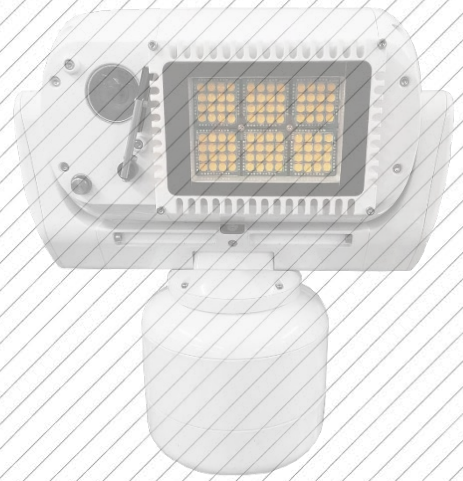
- Border Security
- Perimeter Security
- Vehicle Mounted Surveillance

Specifications may be subject to change without notice.
31/01/20 V4.0



AERON HYPERION

HD VISIBLE CAMERA MODULE



VISIBLE LENS

Focal Length	4.3mm to 129mm
Optical Zoom (Continuous)	30x, Motorised
F Number	F1.6 to F4.7
Horizontal Field of View	63.7° (W) to 2.32° (T)
Format Size	1/2.8"
Focus	Auto focus and motorised manual focus
Iris	Auto iris

CAMERA

Sensor	1/2.8" CMOS Exmor (2.13MP)
Sensor Mode	Full HD 1080p (1920 x 1080) HD
Wide Dynamic Range	Yes (120 dB)
Video Performance (High Sensitivity Mode)	Colour 0.01 lux Mono 0.0008 lux
White Balance	Auto, push and manual
Automatic Level Control (ALC)	Auto / manual
Shutter	1/1 s to 1/10,000
Day/Night Mode	Auto, colour, monochrome
Backlight Compensation	On / off
Noise Reduction	Yes
Digital Zoom	12x (360x combined)
Video Output (PAL / NTSC)	IP (HD-SDI option)
Window	High Definition optical quality glass, with a low reflection and water resistant coating
Defog	Yes
Image Stabilisation	Yes

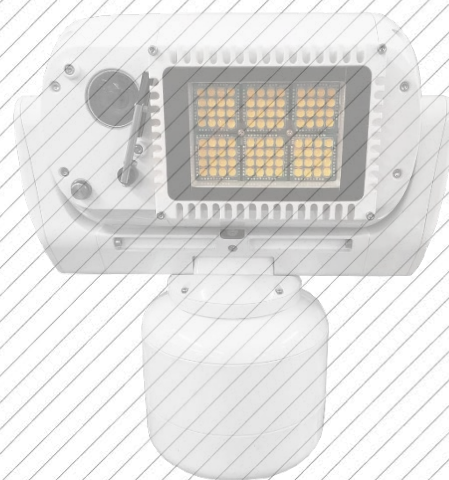
ILLUMINATOR MODULES

ILLUMINATOR INFORMATION

Temperature Range	-40 to +85 degrees C
Maximum Luminous Flux	10,000lm per IB, 60,000 per IM
Beam Widths	3, 30, 60, 90 and 120 degrees
Wave Lengths	White Light, IR (810nm), IR (940nm), Red, Green
Modes	Solid On, Strobe, Burst Mode, Intelligent Beam Width

AERON HYPERION

COMPACT PAN AND TILT UNIT



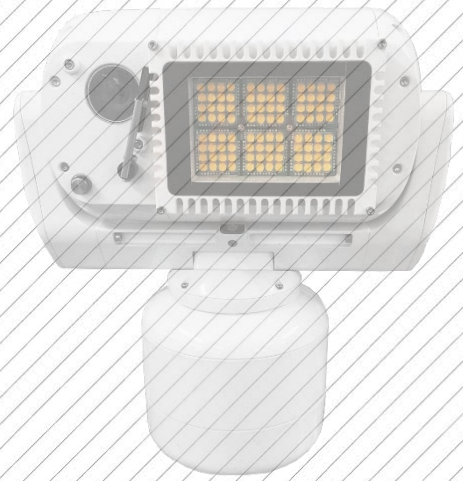
ELECTRICAL AND MECHANICAL

Repeatability	0.05°
Optical Encoder Preset Accuracy	0.01°
Pan Rotation	360° continuous
Pan Speed	Up to 160° per second (excluding ramping)
Tilt Range	+90° to -30° upright (-68° inclined), +30° to -90° inverted
Tilt Speed	Up to 160° per second (excluding ramping)
Speed Control	Zoom dependant speed control
Position Control	Capable of retraining position without drift Automatic position recovery if forced away by a 'non-control' intervention
Motor Drive	Long life toothed polypropylene belt drive, pulleys bonded to keypad shafts for minimum backlash
Rotational Contacts	Heavy duty slip rings for power, data, video and switching for washer
Pan / Tilt Bearings	Sealed for life – no maintenance required
Actuation	Pan and tilt stepper motors
Position Encoders	Optical encoders on pan and tilt motors
Mounting Profile	Upright or inverted
Housing Material	Die-cast hard anodised aluminium
Housing Finish	White powder marine grade paint finish (other colours are available upon request)
Fixing Material	Stainless steel with external fall protection
IP Rating	IP67
Temperature Range	-20°C (-4°F) Up to 65°C (149°F) (-40°C with optional heater)
Power	24VDC, 45W Peak 20W typical in low power mode when idle without heater), (+100W with optional heater), (+300W max with IM).
Weight	10.3kg (20.5lb)
Turning Diameter	340mm / 13.40" Normal – 370mm / 14.57" Offset

TELEMETRY

Presets	127x preset positions, 16x preset tours (maximum of 60 positions each), four 8 minute mimic tours
Protocols	Pelco D, Pelco P, Pelco D Extended, CBC OCP485, Forward Vision Mic1 FV300, Philips, Vicon, SSP, ONVIF Profile S
Parameter Programming	IP, RS485 (not IP)
Privacy Zones	Maximum of eight on-screen simultaneously
Positioning	Absolute positioning
Additional Features	Programmable text within picture (camera ID) Parameter control (RS232 or RS485) TCP/IP prepared Compass heading (cardinal point and/or degrees) Focal length dependant pan and tilt control In built real time clock and date

AERON HYPERION



NETWORK

Ethernet	10/100 Base-T
Connectivity	Cat5e via multicore cable tail/PSU (RJ45)
Configuration	Via web browser
Network Protocols	Networking: IPv4/v6, UDP, TCP, IGMP, ARP, DHCP, DNS, NT Streaming: RTSP, RTP, HTTP, Web Sockets Management: HTTP, HTTPS, Bonjour, ONVIF, PSIA, ION API, SNMP, SMTP Security: Basic / Digest Authentication, SSL
Latency	Can reach less than 100ms latency

IMAGE PROCESSING

Video Compression	H.264/MPEG4 Part 2, M-JPEG (H.265 option available up on request)
H.264 Performance (Standard)	Total D1 at 390 fps or full HD 1080p at 65 fps Examples: 2x 1080p at 30 fps (HD/thermal) or 2x D1 at 30 fps (thermal / SD)
Image Processing	Image resizing and scaling ratio, noise reduction, edge enhancement (sharpness), ROI based video compression
Software Update	Remote / IP accessible
Other Features	Email notifications, text overlay

MISCELLANEOUS

Brackets	Tower mount, pole mount, 1m pendant mount, wall mount, corner mount, swan neck mount
Wiping	Wiper nozzle and wash tank (for the video camera only)
Gyro	2 Axis gyro stabiliser
Image Fusion	Thermal and video image fusion with stepped preset zoom
Analogue	Analogue composite camera alternatives are available upon request
Storage	Up to 64GB in total via SD/MMC (32GB available per channel if using thermal and video / 2x cameras)
Options	Bird Spike, Sunshield, Automatic Tracking, Image Stabilisation, White Light illuminator, Infra Red illuminator, Hybrid White Light and Infra Red Illumination, Light Bars, Heater, Custom Paint Colours Please contact us if you have a specific requirement that is not mentioned or detailed in the part numbers