



HD Video Server

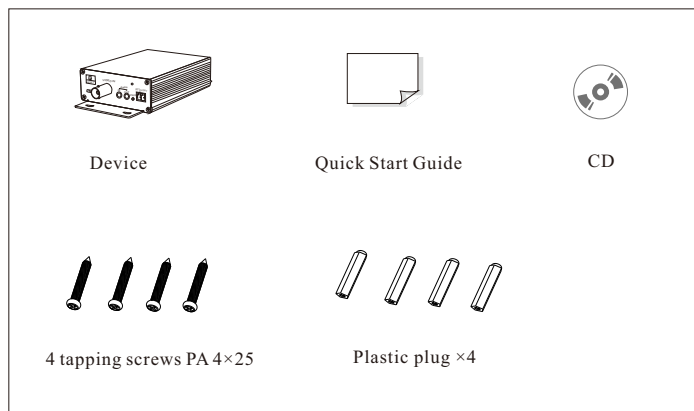
Quick Start Guide

Thank you for purchasing our product. Please read this instruction carefully for correct use of the product and keep it for further reference. All examples and pictures used here are for reference only. There may be several technically incorrect places or printing errors in this manual. The update information will be added into the new version of this manual. The content is subject to change without notice.

1 Warning and Caution

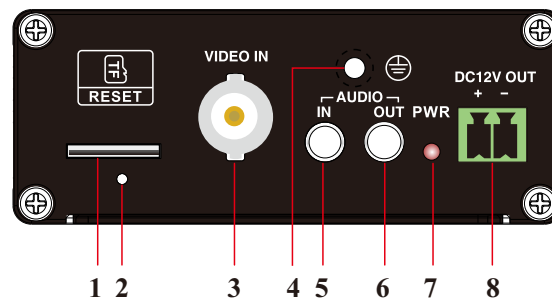
- If the product does not work properly, please contact your dealer or the nearest service center. Never attempt to disassemble the device yourself. (We shall not be responsible for any problems caused by unauthorized repair or maintenance.)
- Keep away from liquid while in use.
- In the use of the product, you must be strict compliance with the electrical safety regulations of the nation and region. When the product is mounted on wall or ceiling, the device shall be firmly fixed.
- Do not use the device beyond specified voltage range.
- Do not drop it or subject it to physical shock.
- If cleaning is necessary, please use clean cloth to wipe it gently.
- Do not place it in extremely hot, cold (the operating temperature shall be -20°C~55°C), dusty or damp locations, and do not expose it to high electromagnetism radiation.
- To avoid heat accumulation, good ventilation is required for operating environment.
- A few parts of the device shall be replaced regularly according to their average enduring time. Regular checking is recommended for all users.

2 Package



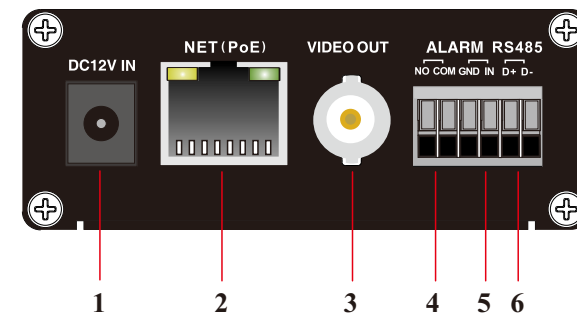
3 Overview

● Front Panel

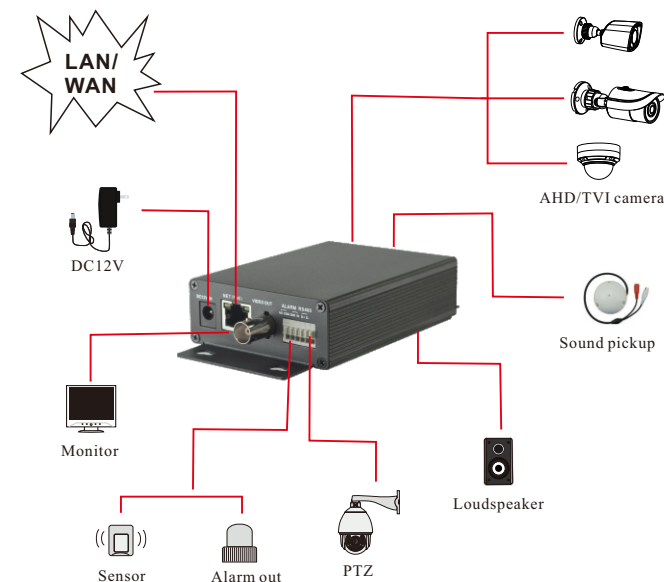


1	Micro SD card slot	5	Audio input
2	Reset	6	Audio output
3	AHD/TVI video input	7	Power indicator
4	Grounding	8	DC12V power output

● Rear Panel



1	DC12V power input	4	Alarm output
2	PoE netowrk interface	5	Alarm input
3	Analog video output	6	RS 485 interface



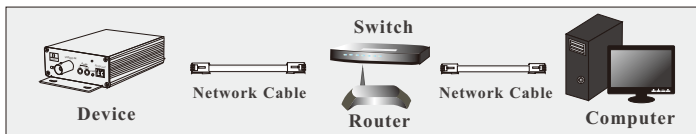
4 Network Connection

Here we take accessing the device via LAN for example. In LAN, there are two ways to access. 1. Access through IP-Tool; 2. Directly Access through IE Browser

The default network settings are as shown below:

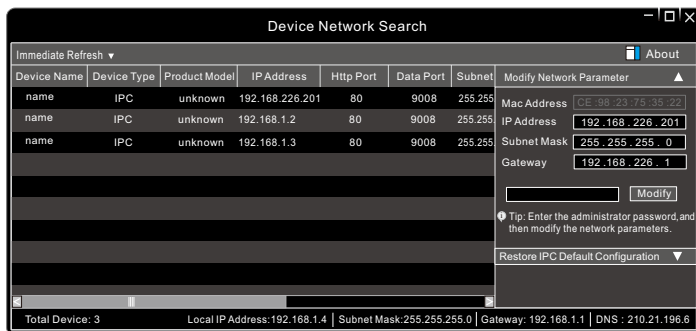
IP address: 192.168.226.201 HTTP:80
Subnet Mask: 255.255.255.0 Data Port:9008
Gateway: 192.168.226.1

You may use the above default settings when you log in the device for the first time.



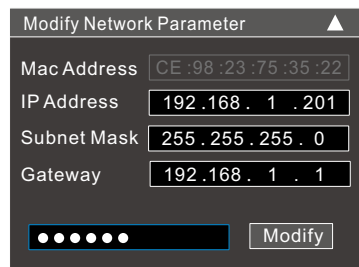
● Access through IP-Tool

- ① Make sure that the device and the PC are well connected via LAN.
- ② Find the IP-Tool from the CD and then install it in the computer. After that, run the IP-Tool as shown below.



- ③ Modify the IP address. The default IP address of this device is 192.168.226.201. Click the information of the device listed in the above table to show the network information on the right hand.

Modify the IP address and gateway of the device and make sure its network address is in the same local network segment as that of the computer. Please modify the IP address of your device according to the practical situation.



For example, the IP address of your computer is 192.168.1.4. So the IP address of the device shall be changed to 192.168.1.X. After modification, please input the password of the administrator and click “Modify” button to modify the setting.

⚠ The default password of the administrator is “**123456**”.

- ④ Double-click the IP address and then the system will pop up the IE browser to connect IP-CAM. Download the Active X control and run it in the computer. Then input the user name and password in the login interface.

Name : admin

Password :

Stream Type : 1920x1080 25fps

Language : English

☐ Remember me

Login

⚠ The default username is **admin**; the default password is **123456**.

● Directly Access Through IE

- ① Make sure that the device and the PC are well connected via LAN.
- ② Find the IP-Tool from the CD and then install it in the computer. After that, run the IP-Tool.
- ③ Modify the IP address and make sure its network address is in the same local network segment as that of the computer.
- ④ Open IE browser and input the modified IP address in the address bar to log in the IE client. If it is the first time for you to log in, you should download the Active X control and run it in the computer. After that, input the default user name and password to login.